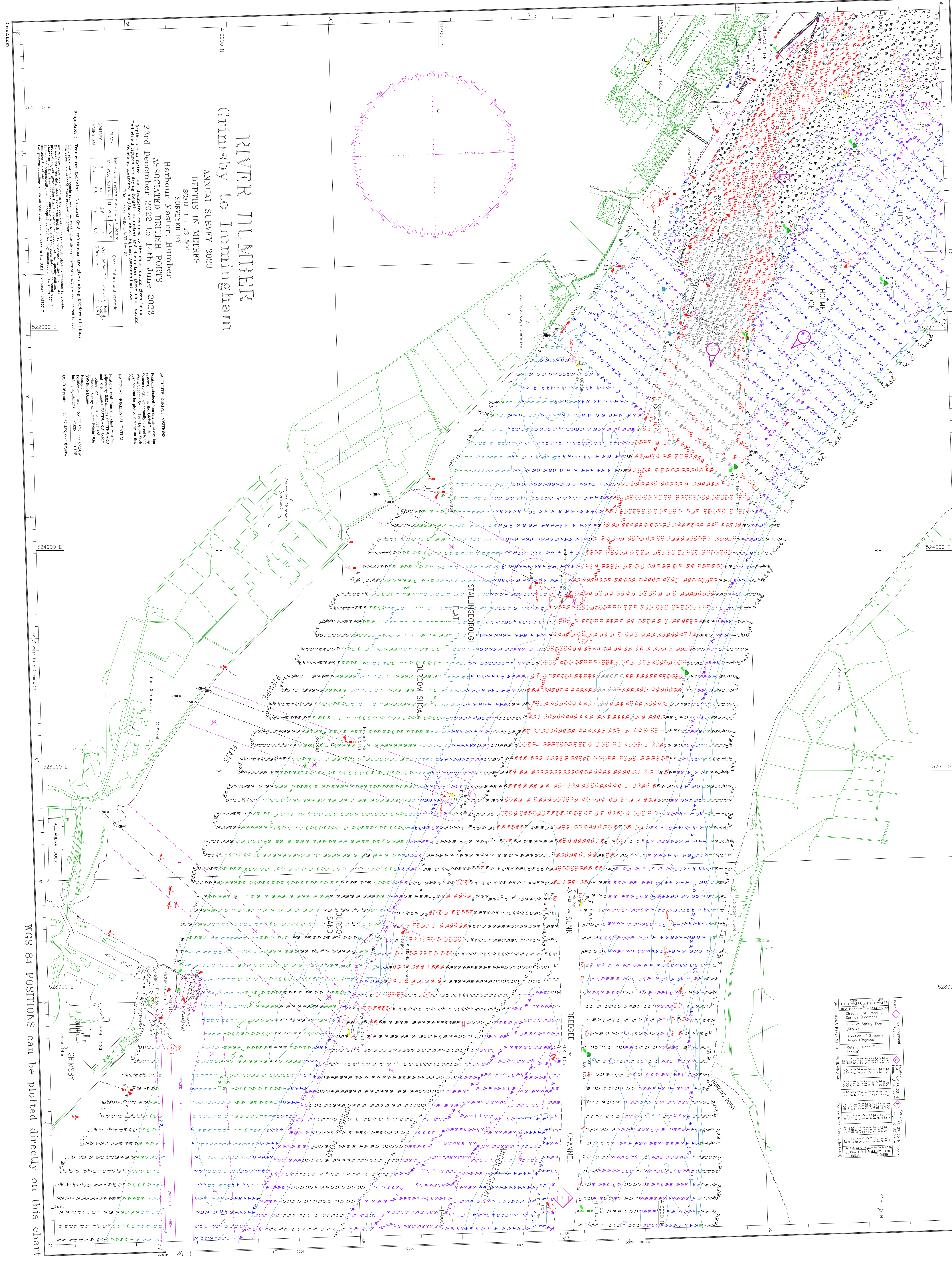


WGS 84 POSITIONS can be plotted directly on this chart

© Copyright 2023. All rights reserved. No part of this product may be reproduced in any form (including photocopying or by electronic means) without prior permission.

WIND		WIND WAVE		WIND WAVE PERIOD	
Direction (Degrees)	Force (Knots)	Direction (Degrees)	Force (Knots)	Direction (Degrees)	Force (Knots)
000	0-1	000	0-1	000	0-1
015	1-2	015	1-2	015	1-2
030	2-3	030	2-3	030	2-3
045	3-4	045	3-4	045	3-4
060	4-5	060	4-5	060	4-5
075	5-6	075	5-6	075	5-6
090	6-7	090	6-7	090	6-7
105	7-8	105	7-8	105	7-8
120	8-9	120	8-9	120	8-9
135	9-10	135	9-10	135	9-10
150	10-11	150	10-11	150	10-11
165	11-12	165	11-12	165	11-12
180	12-13	180	12-13	180	12-13
195	13-14	195	13-14	195	13-14
210	14-15	210	14-15	210	14-15
225	15-16	225	15-16	225	15-16
240	16-17	240	16-17	240	16-17
255	17-18	255	17-18	255	17-18
270	18-19	270	18-19	270	18-19
285	19-20	285	19-20	285	19-20
300	20-21	300	20-21	300	20-21
315	21-22	315	21-22	315	21-22
330	22-23	330	22-23	330	22-23
345	23-24	345	23-24	345	23-24
360	24-25	360	24-25	360	24-25



RIVER HUMBER

Grimsby to Immingham

ANNUAL SURVEY 2023
DEPTHS IN METRES
SCALE 1 : 12 500

SURVEYED BY
Harbour Master, Humber
ASSOCIATED BRITISH PORTS

29th December 2022 to 14th June 2023

Depths are in metres and depths are reduced to the chart datum from below
Underlined figures representing heights are above British Ordnance Mean Tide
Underlined figures representing depths are below British Ordnance Mean Tide

PLACE	HEIGHT	DEPTH	HEIGHT	DEPTH
TO CHART DATUM	TO CHART DATUM	TO CHART DATUM	TO CHART DATUM	TO CHART DATUM
GRIMSBY	7.1	5.7	2.6	1.1
IMMINGHAM	7.3	5.8	2.6	0.9

Projection: Transverse Mercator. Mapped data referenced to Greenwich Meridian of chart. All bearings are true. All distances are in metres. All depths are in metres. All heights are in metres. All bearings are true. All distances are in metres. All depths are in metres. All heights are in metres.

SATELLITE DERIVED POSITIONS
Positions were obtained from the National Hydrographic Institute's (NHI) satellite derived positions. These positions are based on the National Hydrographic Institute's (NHI) satellite derived positions. These positions are based on the National Hydrographic Institute's (NHI) satellite derived positions.

NATIONAL HYDROGRAPHIC INSTITUTE
NHI, 100, Victoria Road, Southampton, SO9 8JH, UK
Tel: +44 (0)1703 533300
Fax: +44 (0)1703 533301
Email: nhinfo@nh.gov.uk
Website: www.nh.gov.uk

WGS 84 POSITIONS can be plotted directly on this chart